



混凝土泵车  
TRUCK MOUNTED CONCRETE PUMP



Web: [machmall.com](http://machmall.com)  
Tel: +86-516 8773 9797  
E: [machmall@xcmg.com](mailto:machmall@xcmg.com)

### 德国技术

## GERMAN TECHNOLOGY

专业、极致，源自德国施维英的顶级技术

Specialty and acme originates from the top-level technology of SCHWING Germany

### 中国制造

## MADE IN CHINA

落地德国制造高标准，实现产品的高可靠、超耐用

By implementing the high standard of German-made realizes highly reliable and durable products.

### 卓越品质

## EXCELLENT QUALITY

用心设计，细节彰显尊重，品质赢得未来

Carefully designed, details demonstrates respect and quality wins the future.



## 技术全面升级

COMPREHENSIVELY UPGRADED TECHNOLOGY

V7系列混凝土泵车

XCMG V7 SERIES TRUCK MOUNTED CONCRETE PUMP

### 极致安全臂架

Ultimately safe boom

### 高刚性下车结构

Lower structure of high rigidity

### 高效裙阀泵送系统

Efficient pumping system of rock valve

### 卓越性能液压系统

Hydraulic system of outstanding performance

### 智慧控制系统

Intelligent control system

### 超长寿命易损件

Easy-wear parts with super-long service life

### 匠心独具的细节

Unique and ingenious details



DURABLE

ADVANCED



## 全方位技术手段臂架更安全、更可靠

All-around technical methods are used to make boom safer and more reliable.

- 基于高可靠理念设计，臂架全工况仿真计算与测试，德国制造工艺，臂架结构更安全；
- The design idea of high reliability, boom full-working condition simulation calculation and testing, and German manufacturing technology ensure safer structure of the boom;



臂架结构破坏性测试  
Destructive test of boom structure



德国制造工艺应用  
Application of German manufacturing technology



臂架100%UT探伤  
100% UT flaw detection for boom

## 新一代微控技术，臂架操作更平稳、更精准

A new generation of micro-control technology is used to make boom operation steadier and more accurate.

- 高精度电液比例智能控制技术，微操控更精准。
- High precision electro-hydraulic proportional intelligent control technology realizes more precise micro-control.

闭环控制 + 斜坡控制  
Closed loop control + Slope control



CAN型多路阀  
CAN multiway valve



CAN型遥控器  
CAN Remote controller



新一代控制器  
A new generation of controller



NO.1

## ULTIMATELY SAFE BOOM 极致安全臂架

- 采用仿生技术优化的全新多节臂设计，有效减少布料盲区，更适应高层、狭小空间布料。

- The adoption of new multi-section boom design optimized by bionic technology effectively reduces placing blind zone and better adapts to placing in high-rise and narrow space.



NO.2

## LOWER STRUCTURE OF HIGH RIGIDITY

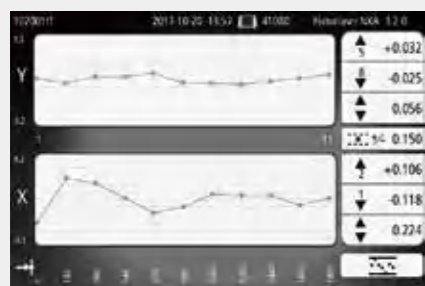
### 高刚性下车结构

### 弧形支腿结构 ARC-SHAPED STABILIZER STRUCTURE

- 伸缩机构简单，故障点少，可靠性高。
- Simple telescoping structure realizes few fault points and high reliability.
- 下车刚性更强，整车工作稳定性更高。
- Chassis of higher rigidity improves overall work stability.



- 基于高刚性结构设计理念，全工况载荷模拟计算与测试，下车结构变形更小，整车工作稳定性更高。
- On the basis of the design concept of high rigidity structure, simulative calculation and testing of full-work-condition loading make chassis structure deformation smaller and overall work stability higher.



- 基于激光引导的同轴装配，活塞头运行轨迹更精确，阻力更小，效率更高。
- Based on laser guide, coaxial assembly makes piston head's moving track more precise, with smaller resistance and higher efficiency.

国际专利的  
裙阀技术

INTERNATIONALLY  
PATENTED ROCK  
VALVE TECHNOLOGY



## NO.3 EFFICIENT PUMPING SYSTEM OF ROCK VALVE 高效裙阀泵送系统



易泵送；  
Easy pumping;

轴端寿命更长；  
Longer service life of shaft-end;

流道更平缓，阻力更小，油耗更低；  
Gentler passageway, smaller resistance and lower oil consumption;

搅拌更充分，吸收效率更高；  
More uniform agitation and higher absorption efficiency;

单边磨损，使用寿命更长；  
One-side wear prolongs service life;

敞口式结构，易于修复，使用成本更低。  
Open-mouth structure is easy for repair, lowering use cost.

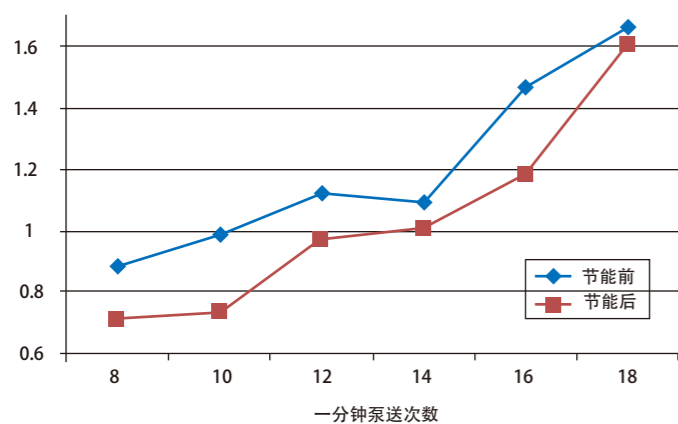
# NO.4

## HYDRAULIC SYSTEM OF OUTSTANDING PERFORMANCE

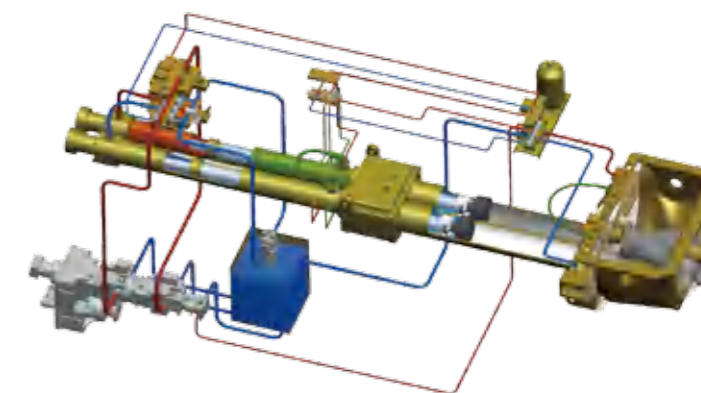
### 卓越性能液压系统

- MPS (微冲击) 换向缓冲技术;
- MPS (micro shock) reversing buffering technology;
- 缓冲过程更稳定、更可靠、冲击更小;
- The buffering process is steadier and more reliable, with smaller impact;
- 换向时间缩短到0.15s以内, 效率提升6%以上。
- The reversing time is shortened to be less than 0.1s and the efficiency is improved by more than 6%.

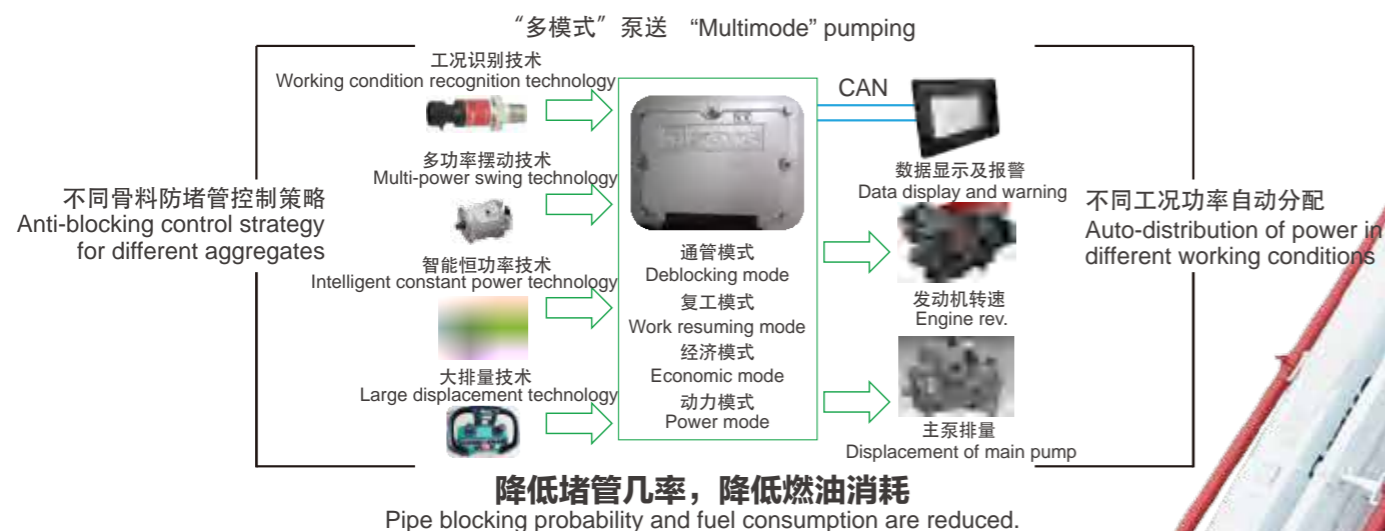
- 超低压损液压系统配合高效裙阀泵送系统, 结合基于节油的功率匹配控制系统, 面对不同混凝土都可以使泵送系统充分吸收发动机功率, 不浪费每一滴燃油, 平均油耗低至0.362L/m<sup>3</sup>。
- Ultra-low pressure loss hydraulic system, coordinated with efficient rock valve pumping system and power matching control system for oil-saving can help pumping system fully absorb engine power regardless of different concrete, without wasting a dip of fuel, and the average oil consumption is as low as 0.362L/m<sup>3</sup>.



- 德国施维英液压技术精髓, 真正实现全液压换向, 换向过程实现全液压闭环自适应控制, 无需任何电气元件参与, 更高效、更稳定、零污染。
- SCHWING Germany's hydraulic technology quintessence truly realizes fully-hydraulic reversing, in which self-adaption control in fully-hydraulic closed-loop is realized, with no need for any electrical components, more effective, steadier and zero-pollution.



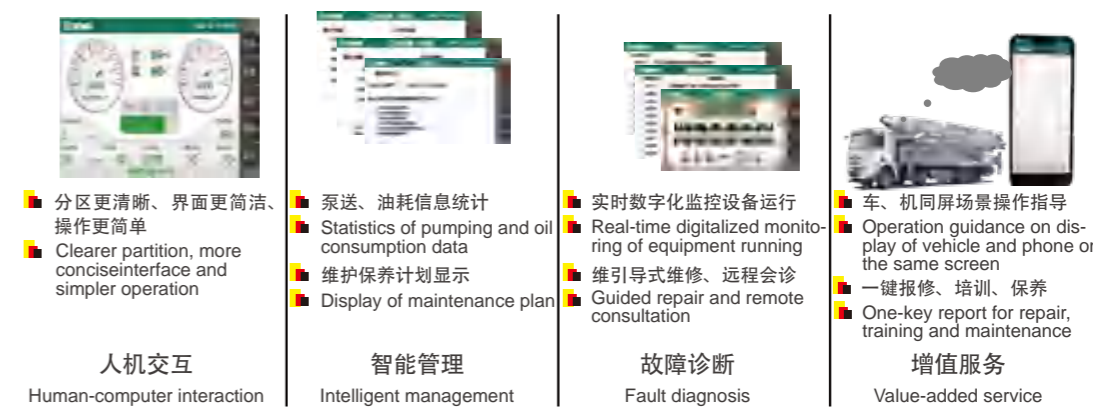
## 智能泵送系统 INTELLIGENT PUMPING SYSTEM



## 分动箱防打齿保护技术 TRANSFER CASE'S GEAR COLLISION PROTECTION TECHNOLOGY

- 智能程序控制，转速监测、双行程逻辑保护，确保0转速切换，机械到位，彻底规避分动箱打齿损伤。
- Intelligent program control, rotary speed monitoring and dual-stroke logical protection ensure switchover at zero rotary speed and mechanics in proper place, thoroughly evading gear collision damage of transfer case.

## NO.5 INTELLIGENT CONTROL SYSTEM 智慧控制系统



**操作管理，更便捷、更省心**  
Operation management is more convenient and reassuring.

## 智能润滑系统控制技术 INTELLIGENT LUBRICATION SYSTEM CONTROL TECHNOLOGY

- 智能程序控制，为泵送系统提供精确润滑方案；
- Intelligent program control provides accurate lubrication scheme for pumping system;
- 带润滑点堵塞监测，实时故障报警，规避次生损失。
- It provides lubricating point blockage monitoring, which can realize real-time fault warning and avoid secondary loss.



NO.6

# EASY-WEAR PARTS WITH SUPER-LONG SERVICE LIFE

## 超长寿命易损件



- 加强型裙阀、整体式合金切割环、高耐磨双层泵管，易损件寿命更长。
- Reinforced rock valve, one-piece alloy cutting ring and highly wear-resisting double-layer pumping pipe prolong the service life of easy-wear parts.

### 全新一代耐磨件

A bran-new generation of wear parts

提升 **30%**  
Improve by 30%

- 增强型拨料翅翼结构防积料，搅动更充分
- Reinforced stirring wing structure prevents aggregate from accumulating and makes agitating better.
- 全合金易损件，持久耐用
- Reinforced stirring wing structure prevents aggregate from accumulating and makes agitating better.

- 精细化、平顺化耐磨层，阻力更小
- Fine and smooth wear-resisting layer produces less resistance.
- 柔性自润滑活塞总成，阻力更小，寿命更长
- Flexible self-lubricating piston assembly has less resistance and longer service life.

### 新结构，新工艺，新材料

New structure, new process and new materials



# NO.7 UNIQUE AND INGENIOUS DETAILS 匠心独具的细节

更便捷的维修保养 Easier repair and maintenance

更舒适的使用体验 More comfortable use experience

更多细节…… More details……

开放式布局  
OPERATION PROMPT DETAIL

低维护设计理念  
AUTOMATIC COMPENSATION OF WEAR RING

操作指示细节  
OPERATION PROMPT DETAIL

耐磨环自动补偿  
AUTOMATIC COMPENSATION OF WEAR RING

液压系统防吸空保护  
HYDRAULIC SYSTEM'S AIR SUCTION PROTECTION

发动机过载保护  
ENGINE OVERLOAD PROTECTION

主泵过载保护  
MAIN PUMP OVERLOAD PROTECTION

贴心的人机交互  
CHAIN-TYPE SNAP RING EASY FOR ASSEMBLY AND DISASSEMBLY

整车五防设计 (防松\防水\防漏\防锈\防积料)  
AUTOMATIC REVERSE AGITATING PROTECTION

易拆装链式卡环  
CHAIN-TYPE SNAP RING EASY FOR ASSEMBLY AND DISASSEMBLY

自动反搅功能保护  
AUTOMATIC REVERSE AGITATING PROTECTION

发动机低速保护  
ENGINE LOW-SPEED PROTECTION

自动集中稀油润滑  
AUTOMATIC CENTRALIZED THIN OIL LUBRICATION

活塞自动退回技术  
PISTON'S AUTOMATIC RETURN TECHNOLOGY



# 参数 Parameter table



类别 CATEGORY	项目 ITEM	单位 UNIT	HB30V	HB37V	HB39V	HB43V	HB50V
整机 Overall	外形尺寸Outline dimension	mm	10190×2500×3700	9900×2525×3850	11100×2500×3850	11160×2500×3990	12740×2530×4000 12600×2530×4000
	整机重量Overall weight	kg	20000	23000	27200	31000	34000 35000
	品牌Brand	--	重汽 Sinotruk	重汽 Sinotruk	重汽 Sinotruk	重汽 Sinotruk	重汽 Sinotruk 奔驰 Benz
底盘 Chassis	型号Model	--	ZZ5207M521GE1	ZZ5231N521GE1	ZZ5347V524HE1	ZZ5347V524HC1	ZZ5347V524HE1 Actros3341 E5
	轴距Wheelbase	mm	5200	5200	4800+1400	4800+1400	4800+1400 4800+1350
	最大净功率 Max.power	kW	203	225	294	287	294 300
发动机 Engine	尾气排放标准 Emission	--	国V ChinaV	国V ChinaV	国V ChinaV	国III ChinaIII	国V ChinaV 国V ChinaV
	理论输送量 Theoretical	m <sup>3</sup> /h	100	120/80	130	170	170
泵送系统 Pumping system	泵送混凝土压力 Concrete pumping pressure	MPa	8	8.7/13	8	8	8
	理论泵送次数 Theoretical pumping times	次/min	25	28~30/18~20	24~27	23~26	23~26
	输送缸内径×行程 Delivery cylinder diameter × stroke	mm	φ230×1600	φ230×1600	φ230×2000	φ260×2000	φ260×2000
布料杆 Placing boom	布料杆可达高度Reach height	m	29.6	36.5	39.1	43	49.1
	布料杆可达深度 Reach depth	m	18	24.9	26.8	29	34.4
	布料杆回转半径 Slewing radius	m	25.7	32.5	35.1	37.3	44.2
	布料杆回转角度 Slewing angle	°	360	360	±270	±270	±270
其它Others	配料型式 Transfer tube	--	裙阀 Rock valve	S阀	裙阀 Rock valve	裙阀 Rock valve	裙阀 Rock valve

类别 CATEGORY	项目 ITEM	单位 UNIT	HB52V		HB58V		HB62V		HB67V
整机 Overall	外形尺寸Outline dimension	mm	13040×2530×4000	12900×2530×4000	14570×2530×3990	14300×2530×4000	15610×2530×3990	14600×2530×4000	15780×2500×4000
	整机重量Overall weight	kg	34000	35000	44000	44000	44000	44000	53000
	品牌Brand	--	重汽 Sinotruk	奔驰 Benz	重汽 Sinotruk	奔驰 Benz	重汽 Sinotruk	奔驰 Benz	奔驰 Benz
底盘 Chassis	型号Model	--	ZZ5347V524HE1	Actros3341 E5	ZZ5447V466HE1	Actros4141E5	ZZ5447V466HE1	Actros 4141E5	Actros 5046E5
	轴距Wheelbase	mm	4800+1400	4800+1350	2500+4300+1400	2300+4000+1350	2500+4300+1400	"2020+4280+1350/ 2300+4000+1350"	2020+5180+1350+1450
	最大净功率 Max.power	kW	294	300	294	300	294	300	335
发动机 Engine	尾气排放标准 Emission	--	国V ChinaV	国V ChinaV	国V ChinaV	国V ChinaV	国V ChinaV	国V ChinaV	国V ChinaV
	理论输送量 Theoretical	m <sup>3</sup> /h	170	170	170	170	170	170	170
泵送系统 Pumping system	泵送混凝土压力 Concrete pumping pressure	MPa	8	8	8	8	8.6	8	
	理论泵送次数 Theoretical pumping times	次/min	23~26	23~26	21~23	21~23	22~24	21~23	
	输送缸内径×行程 Delivery cylinder diameter × stroke	mm	φ260×2000	φ260×2000	φ260×2200	φ260×2200	φ260×2200	φ260×2200	
布料杆 Placing boom	布料杆可达高度Reach height	m	51.2	51.2	57.5	57.5	61.1	66.1	
	布料杆可达深度 Reach depth	m	36.1	36.1	40.5	40.5	43.6	48.6	
	布料杆回转半径 Slewing radius	m	46	46	52.5	52.5	55.9	60.9	
	布料杆回转角度 Slewing angle	°	±270	±270	±270	±270	±270	±270	
其它Others	配料型式 Transfer tube	--	裙阀 Rock valve	裙阀 Rock valve	裙阀 Rock valve	裙阀 Rock valve	裙阀 Rock valve	裙阀 Rock valve	

# 施工案例

## Construction cases



HB62V 泵车江苏展雄姿  
HB62V boom pump is exhibiting its manhood in Jiangsu



徐工HB62V泵车入驻衡阳  
XCMG HB62V boom pump is settling in Hengyang



四蛟龙齐助尼日利亚建设  
Four boom pump are cooperating like dragons in Nigeria



徐工泵车助力埃塞俄比亚建设  
XCMG boom pump is working in Ethiopian construction



徐工泵车入驻迪拜西麦斯集团  
XCMG boom pump is setting in CEMEX Dubai



徐工HB52V泵车云南施工  
XCMG HB52V boom pump is working in Yunnan



徐工泵车哈尔滨小试牛刀  
XCMG boom pump is trying its hand in Haerbin



苏州双V7联手施工  
Suzhou double V7 teamed up with construction



徐工混凝土兄弟助力菲律宾物流园建设  
XCMG concrete brothers help Philippine construction



徐工泵车助力乌兹别克斯坦建设  
XCMG boom pump is working in Uzbekistan

# 施工案例

## Construction cases



30米泵车厂房内施工 (30米泵车厂房小试牛刀)  
HB30K boom pump is trying its hand at the workshop.



HB58米泵车展雄风  
HB58K boom pump is exhibiting its manhood.



马来西亚第一台HB53K助力关丹产业园  
HB53K boom pump is working in Kuantan Industrial Park of Malaysia.



徐工金闪耀“一带一路”  
XCMG's gold machines are shining "One Belt, One Road" countries.



四蛟龙齐助华新城建设  
Four boom pumps are cooperating like dragons in Nanjing Huaxincheng Construction.



HB52K唐洪工业园区首秀  
HB52K boom pump is debuting in Tanghong Industrial Park.



徐工泵车燃情世界杯  
XCMG boom pump is enlivening the World Cup.



徐工泵车助力印度尼西亚  
XCMG boom pump is working in Indonesia.



徐工泵车贵阳展雄风  
XCMG boom pump is exhibiting its manhood in Guiyang.



HB53K泵车香港地铁站小试牛刀  
First show of HB53K boom pump at subway station of Hongkong